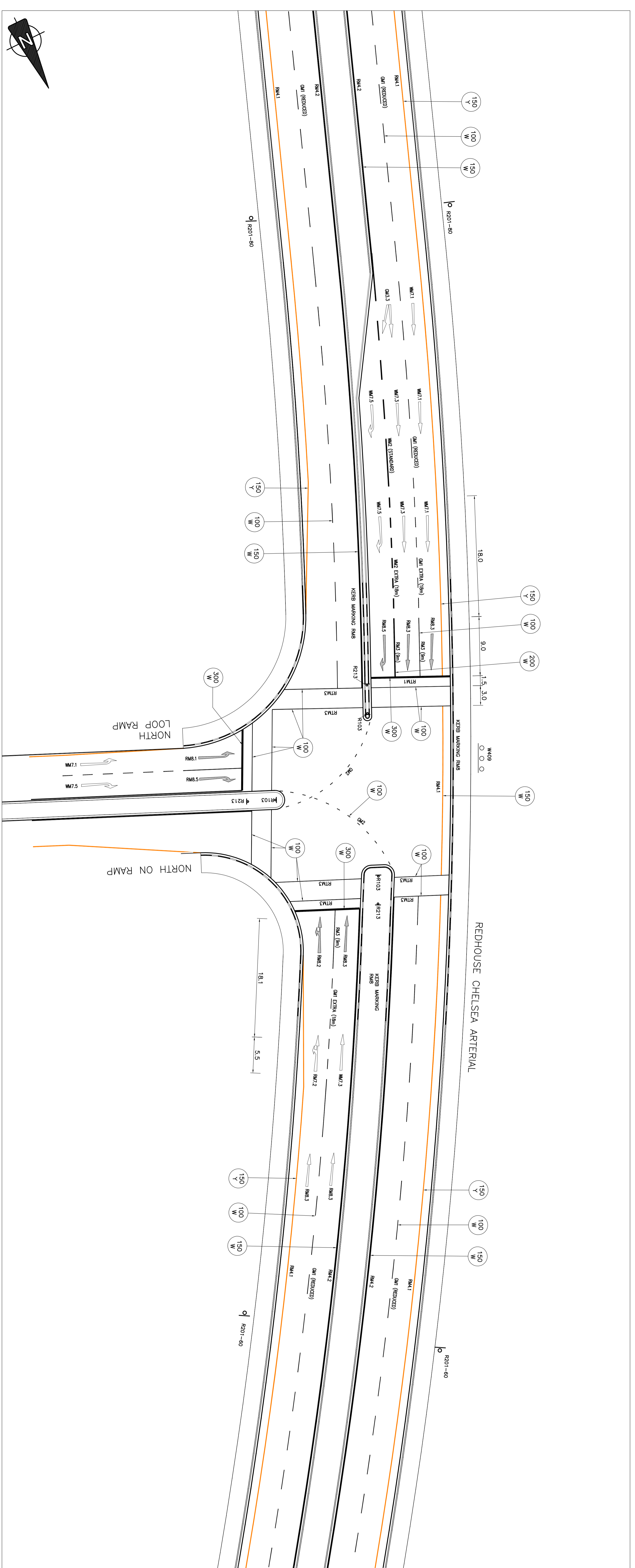
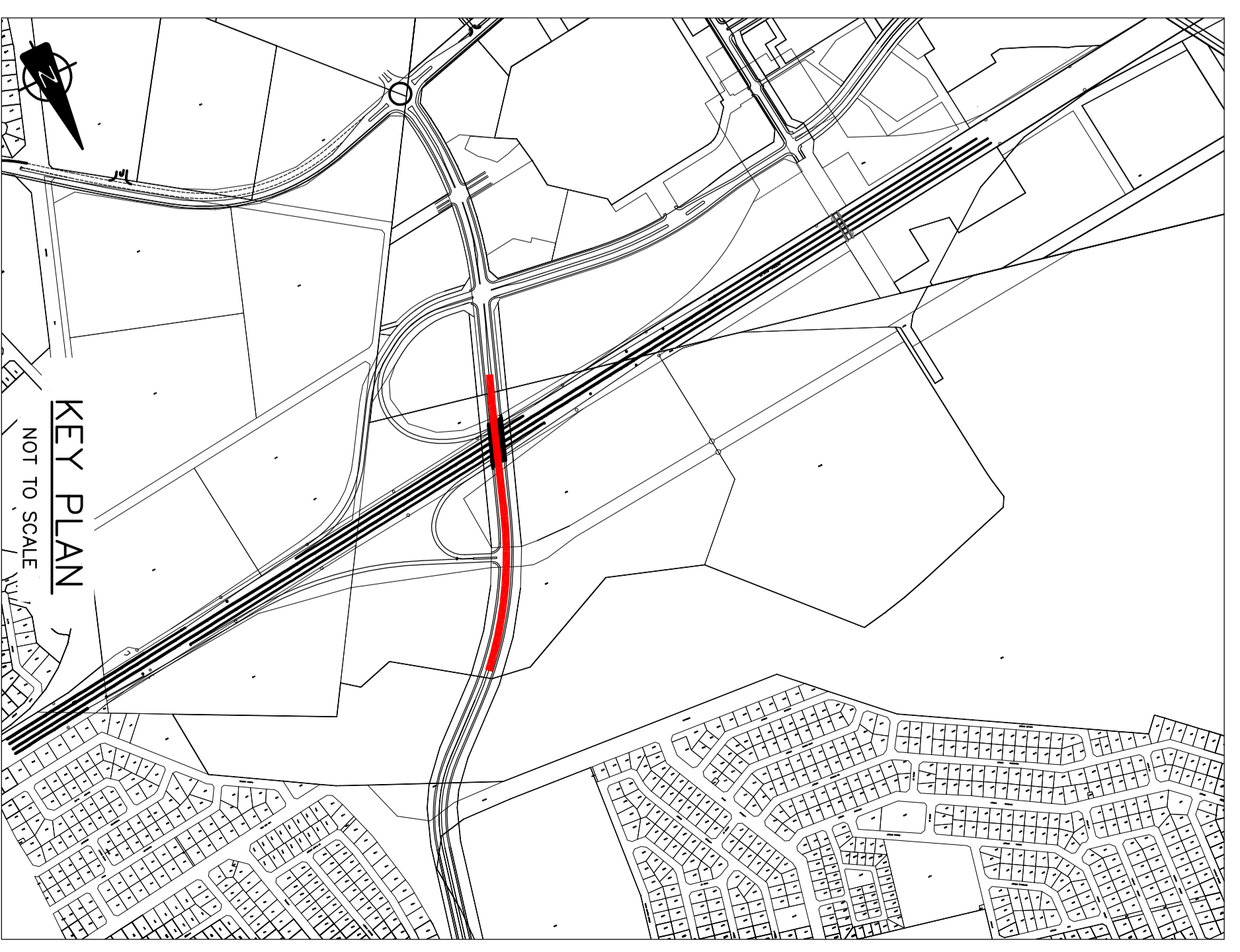


REDHOUSE CHELSEA ARTERIAL: CH640 - CH1200  
SCALE 1:500



REDHOUSE CHELSEA ARTERIAL - CH1400 INTERSECTION  
SCALE 1:250



REV	DATE	REVISION DESCRIPTION	DRAWN	REV	DATE	REVISION DESCRIPTION	DRAWN
1							
2							
3							
4							
5							
6							
7							
8							
9							
10							

THE MASTER HELD AT THE BRS  
PORT ELIZABETH  
OFFICE BEARS  
THE ORIGINAL SIGNATURE OF  
APPROVAL.

**BKS**  
PORT ELIZABETH OFFICE  
CENTRAL  
6000  
TEL: 07141 585 1514  
FAX: +27 0714 585 4478  
REG. NO. 1596/0006282/07

**nelson mandela bay**  
MUNICIPALITY  
PORT ELIZABETH, Uitenhage, Despatch  
NELSON MANDELA BAY MUNICIPALITY

PROJECT DESCRIPTION  
**REDHOUSE CHELSEA ARTERIAL:  
EXTENSION OF WALKER DRIVE TO CAPE ROAD**

DRAWING TITLE  
**REDHOUSE CHELSEA ARTERIAL:  
ROAD PAINT MARKINGS LAYOUT CH640-CH1200**

FUNCTION	NAME	SIGNATURE
DESIGNED BY	R. ESTERHUIZEN	N/A
DRAWN BY	M.S. MAYER	N/A
CHECKED BY	T.G. ROOSEN	N/A
APPROVAL - CONSULTANT	N/A	N/A
APPROVAL - PROFESSIONAL	N/A	N/A

DATE	FUNCTION	NAME	SIGNATURE
2012-06-21	PROFESSIONAL REG. NO. 20100022		

100788 - 00 - 10 - 101 - P - 00  
COPYRIGHT RESERVED