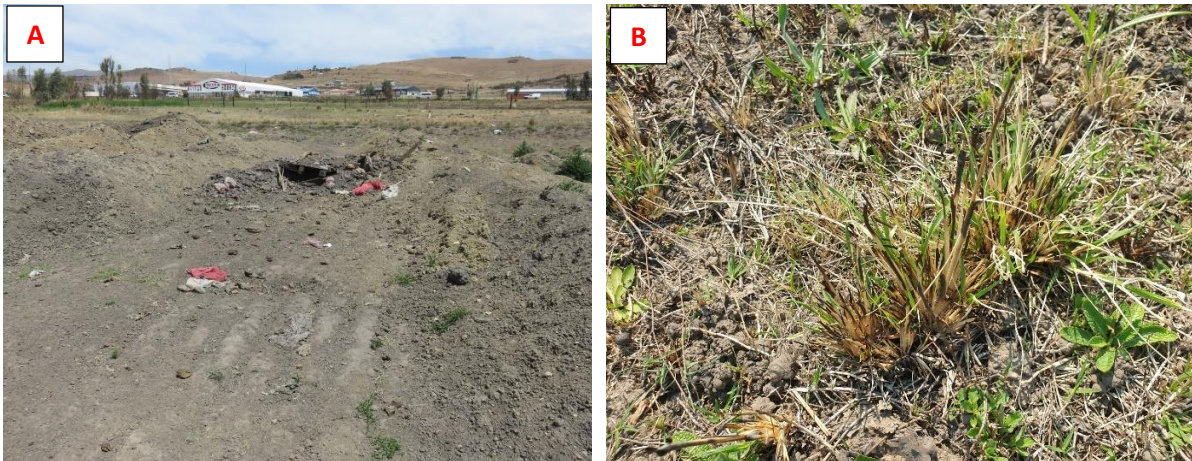


**ADDITIONAL SITE PHOTOGRAPHS TAKEN IN AUGUST 2021**



*Figure 1: Wetland observed within the 500m radius of the project site*



*Figure 2: (A) Dumping of soil and (B) burnt vegetative cover observed within the project site*



**ADDITIONAL SITE PHOTOGRAPHS TAKEN IN AUGUST 2021**



*Figure 3: Dolerite outcrop observed on the area where the culvert is proposed*



*Figure 4: Additional stormwater management infrastructure observed within the project site*