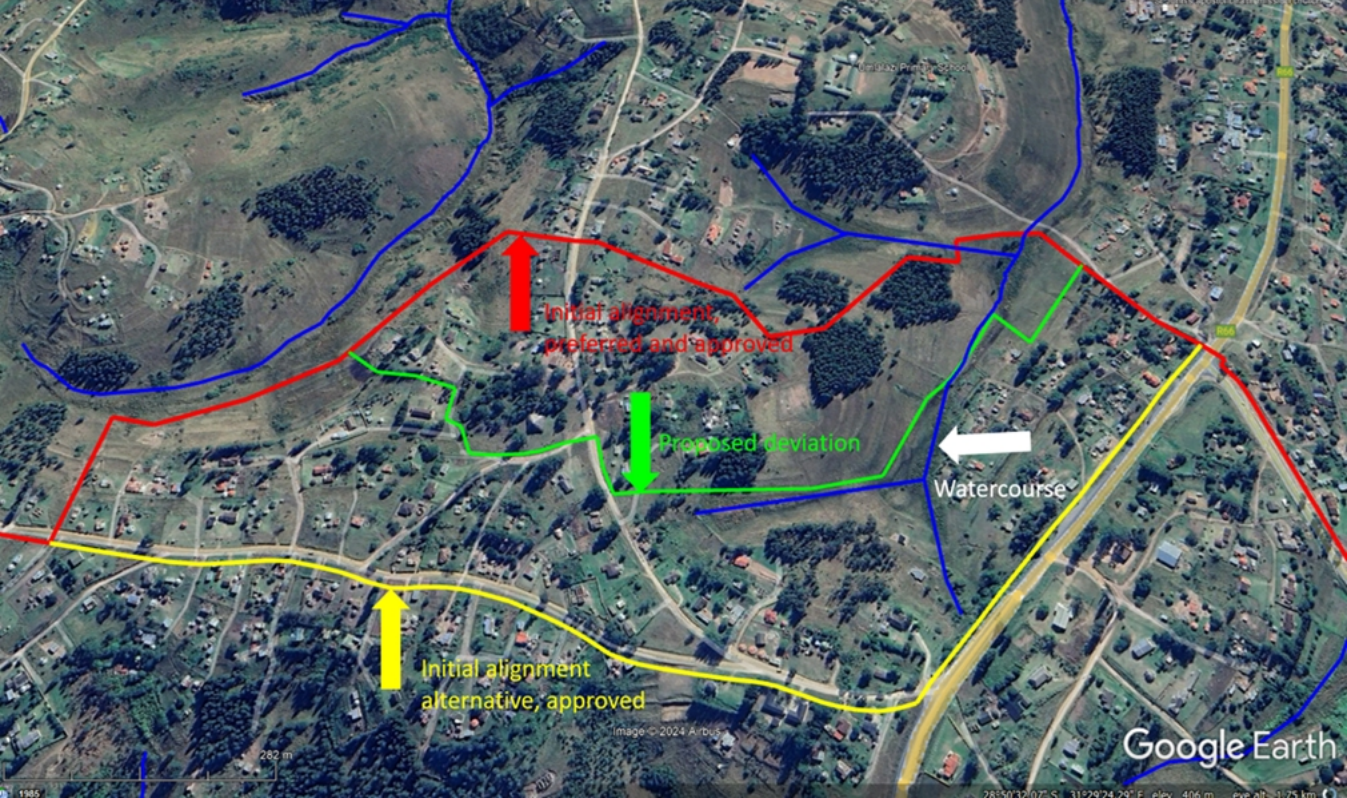


Appendix A2

**Approved pipeline route,
Preferred alternative &
Proposed realignment map**



Initial alignment,
preferred and approved



Proposed deviation



Watercourse



Initial alignment
alternative, approved

Image © 2024 Airbus

Google Earth

262 m

1985

28°50'32.07" S, 31°29'24.29" E, elev. 406 m, eye alt. 1.75 km