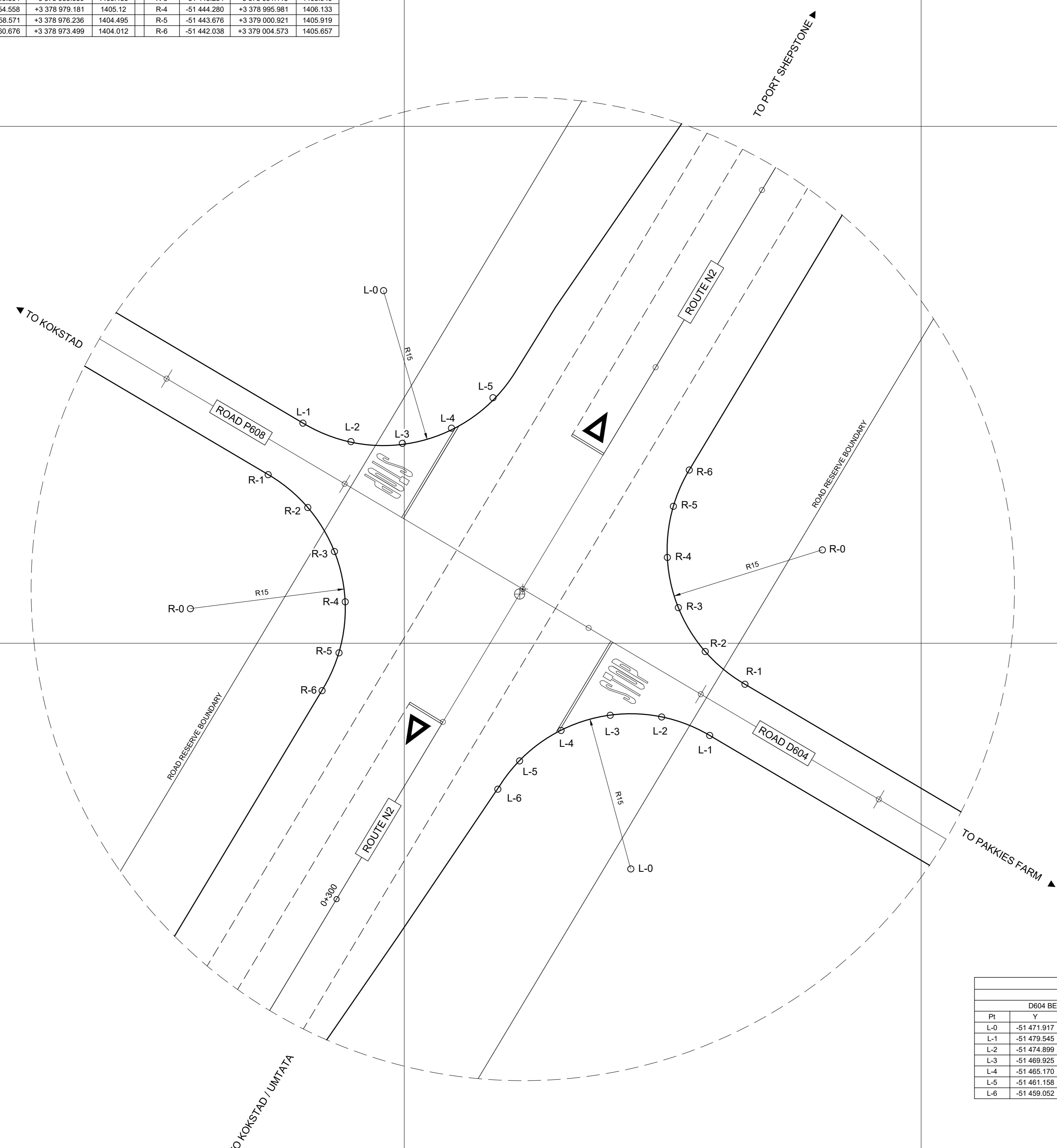


BELLMOUTH SETTING OUT POINTS							
WGS84 Lo 29°							
P608 BELLMOUTH - LEFT				P608 BELLMOUTH - RIGHT			
Pt	Y	X	Z	Pt	Y	X	Z
L-0	-51 448 001	+3 378 965 886	-	R-0	-51 429 315	+3 378 996 659	-
L-1	-51 440 184	+3 378 978 698	1405 562	R-1	-51 426 824	+3 378 983 582	1405 918
L-2	-51 444 820	+3 378 980 483	1405 613	R-2	-51 440 654	+3 378 988 850	1405 883
L-3	-51 449 804	+3 378 980 650	1405 486	R-3	-51 443 234	+3 378 991 115	1405 940
L-4	-51 454 558	+3 378 979 181	1405 12	R-4	-51 444 280	+3 378 995 981	1406 133
L-5	-51 458 571	+3 378 976 236	1404 495	R-5	-51 443 676	+3 379 000 921	1405 919
L-6	-51 460 676	+3 378 973 499	1404 012	R-6	-51 442 038	+3 379 004 573	1405 657



BELLMOUTH SETTING OUT POINTS							
WGS84 Lo 29°							
D604 BELLMOUTH - LEFT				D604 BELLMOUTH - RIGHT			
Pt	Y	X	Z	Pt	Y	X	Z
L-0	-51 471 917	+3 379 021 834	-	R-0	-51 490 449	+3 378 990 969	-
L-1	-51 479 545	+3 379 008 918	1405 560	R-1	-51 482 957	+3 379 003 965	1405 203
L-2	-51 474 899	+3 379 007 132	1405 755	R-2	-51 479 115	+3 379 000 802	1405 240
L-3	-51 469 925	+3 379 006 965	1405 983	R-3	-51 476 517	+3 378 996 557	1405 232
L-4	-51 465 170	+3 379 008 435	1406 258	R-4	-51 475 452	+3 378 991 696	1405 137
L-5	-51 461 158	+3 379 011 380	1406 563	R-5	-51 475 035	+3 378 985 753	1404 948
L-6	-51 459 052	+3 379 014 117	1406 780	R-6	-51 477 572	+3 378 983 240	1404 780

NOTE:
THIS DRAWING TO BE READ IN
CONJUNCTION WITH
INTERSECTION SETTING OUT PLAN
DWG. No. 4704_27-R-021

**FOR APPROVAL
PURPOSES ONLY**

Symbol	Date	Description	Checked	Signed
AMENDMENTS				

AS BUILT
Supervising Engineer: Date:
Supervising Authority:

Continued from:-
Continued on:-
Cross Section No:-
Longitudinal Section No:-
Survey Plan No:-

Designed by:- S. MOODLEY
Checked by:- S. MATENZHE
Drawn by:- B. NEWTON
Checked by:- S. MOODLEY
File Reference:-



Designed by:- **JG AFRIKA**
6 Pin Oak Ave. Hilton / P.O. Box 794 Hilton
TEL: (033) 343 6700
S.P. JANGALI
for JG AFRIKA (Pty) Ltd
Date:
Dwg. No. 4704_27-R-023

TRANSPORTATION ENGINEERING:
CHIEF ENGINEER
HEAD: TRANSPORT

MAIN ROAD D604 / P608
PORTION
RE-ALIGNMENT OF D604 - P608
BELLMOUTH SETTING OUT DETAILS

Staked Km distance: -
Scale: 1 : 200
Sheet No: 1 of 1
Plan No: C.....

W:\Projects\4704 - Road Consulting Services (2014)\4_27 - Realignment of D604 - P608 - Drawing\Detailed Design\Working\0204 - D604 BELLMOUTH SETTING OUT 01-08-2021.dwg